

THE BEAVER: LIVING IN HARMONY WITH NATURE'S ECO-ENGINEERS

WE AND THE EARTH ARE ONE



Artist: Carl Gawboy

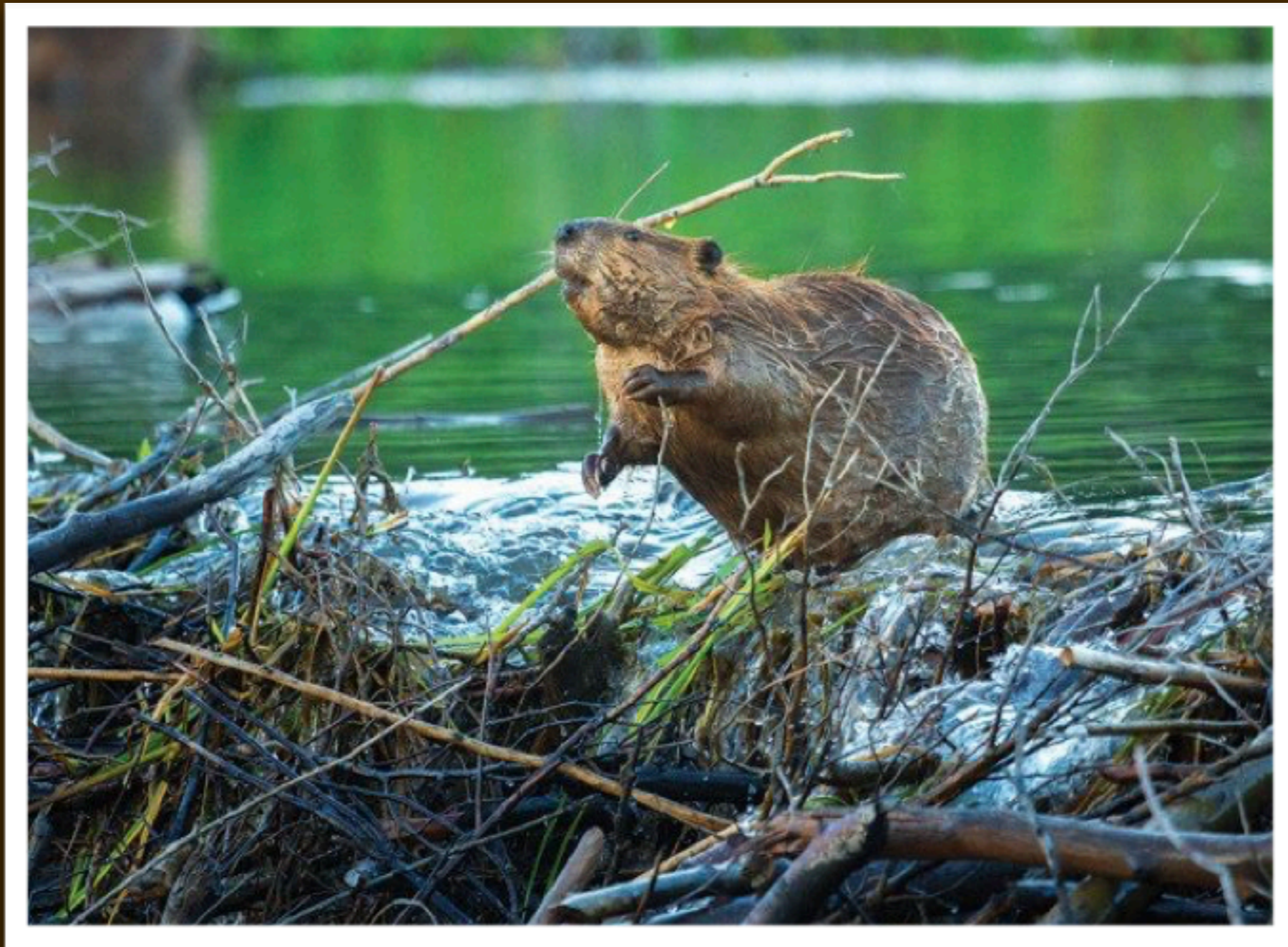
WE TAKE TIME TO RESPECTFULLY ACKNOWLEDGE THAT INDIGENOUS PEOPLES AND NATIONS, INCLUDING THE ANISHINAABE AND THE DAKOTA, HAVE STEWARDED, THROUGH GENERATIONS, THE LANDS AND WATERWAYS OF WHAT IS NOW MINNESOTA. WE HONOR AND RESPECT THE ENDURING RELATIONSHIP THAT EXISTS BETWEEN THESE PEOPLES AND NATIONS AND THIS LAND.



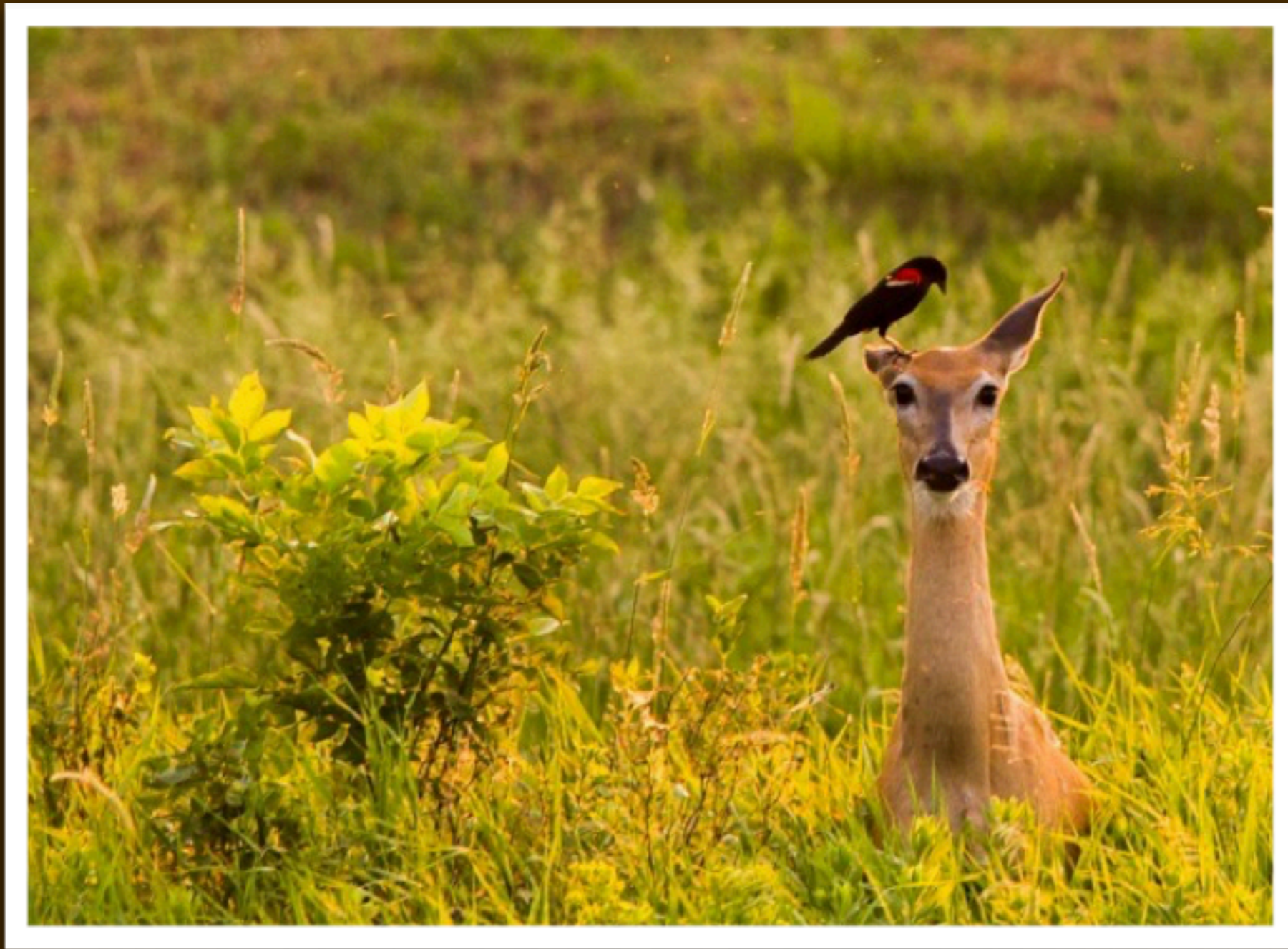
TONIGHT WE WISH TO SHARE IMPORTANT WORK BEING DONE TO SUPPORT BEAVERS AND THE ECOSYSTEMS THEY FOSTER. THE WORK IS GROUNDED IN **RESPECT** FOR DIVERSE ECOSYSTEMS; **COMMUNITY** ENGAGEMENT; **STEWARDSHIP** WITH NATURE; **HOSPITALITY** THROUGH COLLABORATION; & **LOVE OF LEARNING** TO FOSTER KNOWLEDGE AND UNDERSTANDING



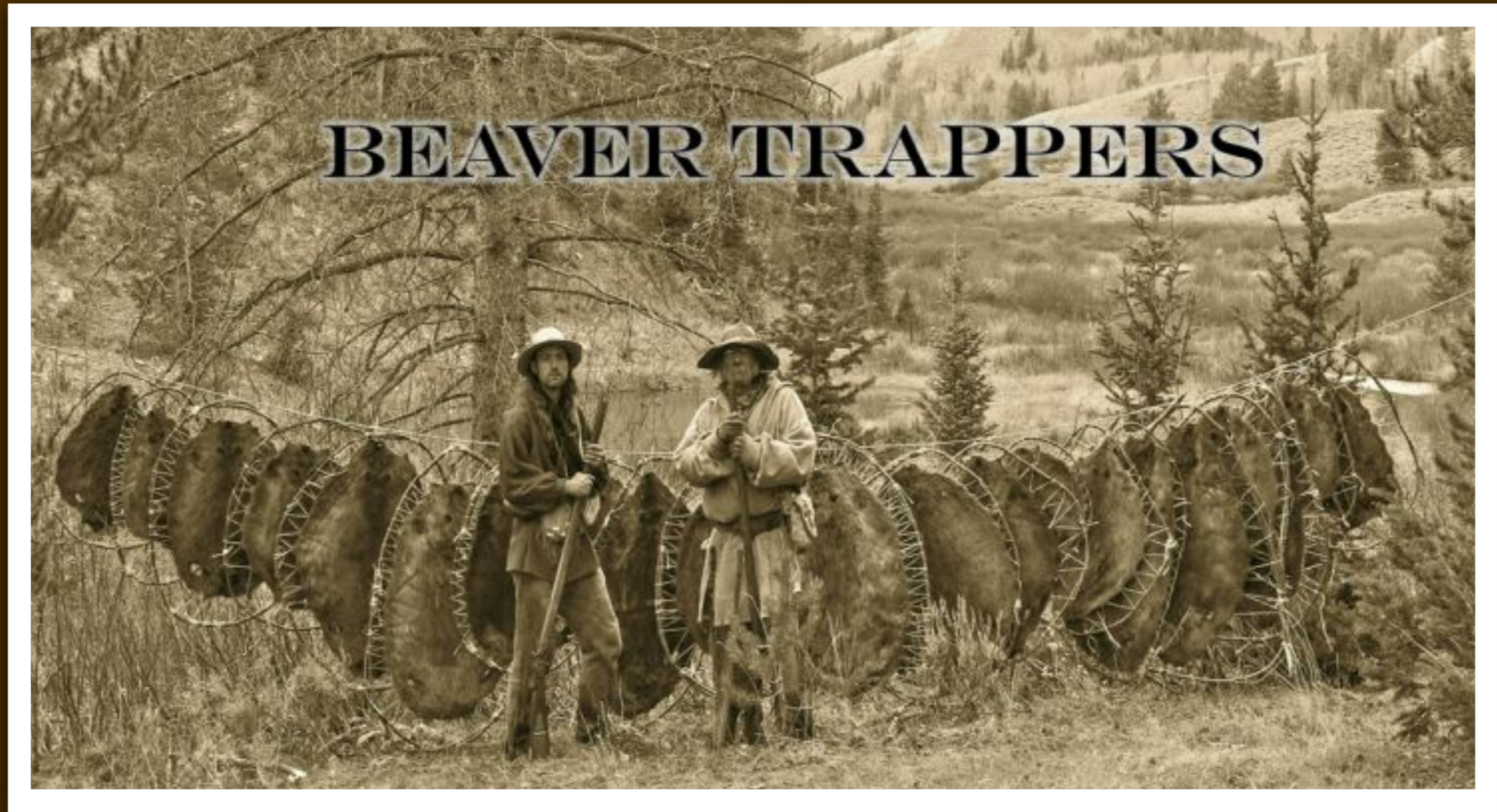
THEY ARE NATURE'S (*BEST*) ECO-ENGINEERS



IN PRE-COLONIAL TIMES, BEAVERS WERE FOUND OVER MOST OF THE NORTH AMERICAN CONTINENT. THE DAMS AND PONDS BUILT FOR THEIR LODGES AND THE RESULTING WETLANDS HAVE BEEN AMONG THE MOST BIOLOGICALLY PRODUCTIVE ECOSYSTEMS IN THE WORLD.



FROM THE 1600S, BEAVERS WERE
TRAPPED FOR PELTS AND ALMOST
WIPED OUT BY THE 1930S



<http://www.martinezbeavers.org>

WITHOUT BEAVERS TO MAINTAIN DAMS, BARRICADES BROKE AND DECAYED. AS A RESULT, LITERALLY MILLIONS OF WATER CATCHMENTS DRIED UP. PONDS BECAME MEADOWS; MEADOWS BECAME FORESTS OR AGRICULTURAL LAND. WITH THE RETURN OF BEAVERS, AQUIFERS & WATER SOURCES CAN BE RESTORED



BEAVERS BEGAN RECOLONIZING NORTHERN MINNESOTA—INCLUDING THE WATERSHEDS OF LAKE SUPERIOR IN THE 1930S AND '40S. A STUDY, LED BY SEAN JOHNSON-BICE WITH THE UNIVERSITY OF MINNESOTA, DULUTH, EXPLORED HOW THE ECOSYSTEM CHANGED SINCE THEIR RECOLONIZATION BY EXAMINING FIVE WATERSHEDS OVER A 70 YEAR PERIOD,



THE GOOD NEWS...THEY FOUND THAT WHILE THERE WERE INDIVIDUAL FLUCTUATIONS IN WATER STORAGE FROM BEAVERS, THE TOTAL WATER STORED BY BEAVERS ACROSS THE WATERSHEDS REMAINED RELATIVELY STABLE ONCE THE BEAVERS RECOLONIZED THE AREA.



1. ORGANIZATIONS SUCH AS "WORTH A DAM" - MARTINEZ BEAVERS IN CA, OR BEAVERCON PROVIDE OUTREACH AND EDUCATIONAL PROGRAMS ABOUT THE IMPORTANCE OF BEAVERS FOR OUR STREAMS, RIVERS, LAKES, AND WOODLANDS



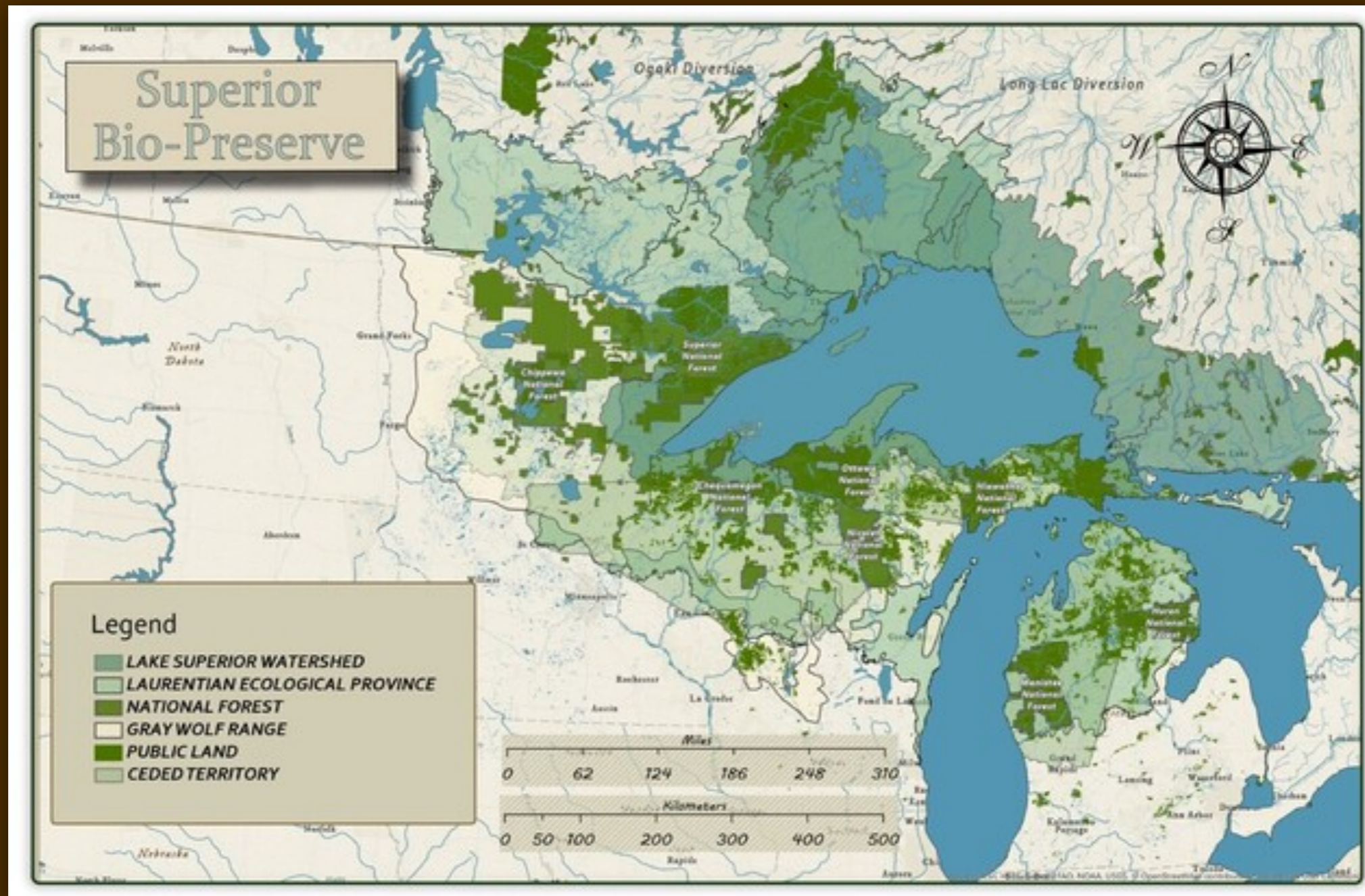
**2. WITH INNOVATIVE THINKING AND ACTION,
WE CAN COEXIST WITH BEAVERS, PROTECT
HUMAN PROPERTY AND INTERESTS, SAVE
MONEY, AND RESPONSIBLY CARE FOR NATURE**



THROUGH COLLABORATION WITH PUBLIC AND PRIVATE LANDOWNERS, PEOPLE & ORGANIZATIONS, LIKE **SKIP LISLE WITH BEAVER DECEIVERS INTERNATIONAL**, PROVIDE ASSISTANCE TO ADDRESS CONFLICTS RELATED TO BEAVERS



3. ECOLOGICAL INITIATIVES WITH **BOB BOUCHER & THE SUPERIOR BIO-CONSERVANCY** TO RESTORE AND SUPPORT BIODIVERSITY, GENETIC EXCHANGE, ECOSYSTEM SERVICES AND EVOLUTIONARY PROCESSES FOR FUTURE GENERATIONS... A HEALTH CARE PLAN FOR THIS BIO-REGION OF THE EARTH.



IN CLOSING:

THE BEAVER TEACHES US ABOUT COMMUNITY
THE BEAVER REPRESENTS THE ACCEPTANCE THAT ALL MAY
CONTRIBUTE TO BUILDING THE COMMON GOOD, AND
SIGNIFIES GOOD NEIGHBORS AND STRONG FAMILIES

RICHARD KRENTZ, A MEMBER OF THE COAST SALISH TRIBE



THANK YOU FOR YOUR
INTEREST!

